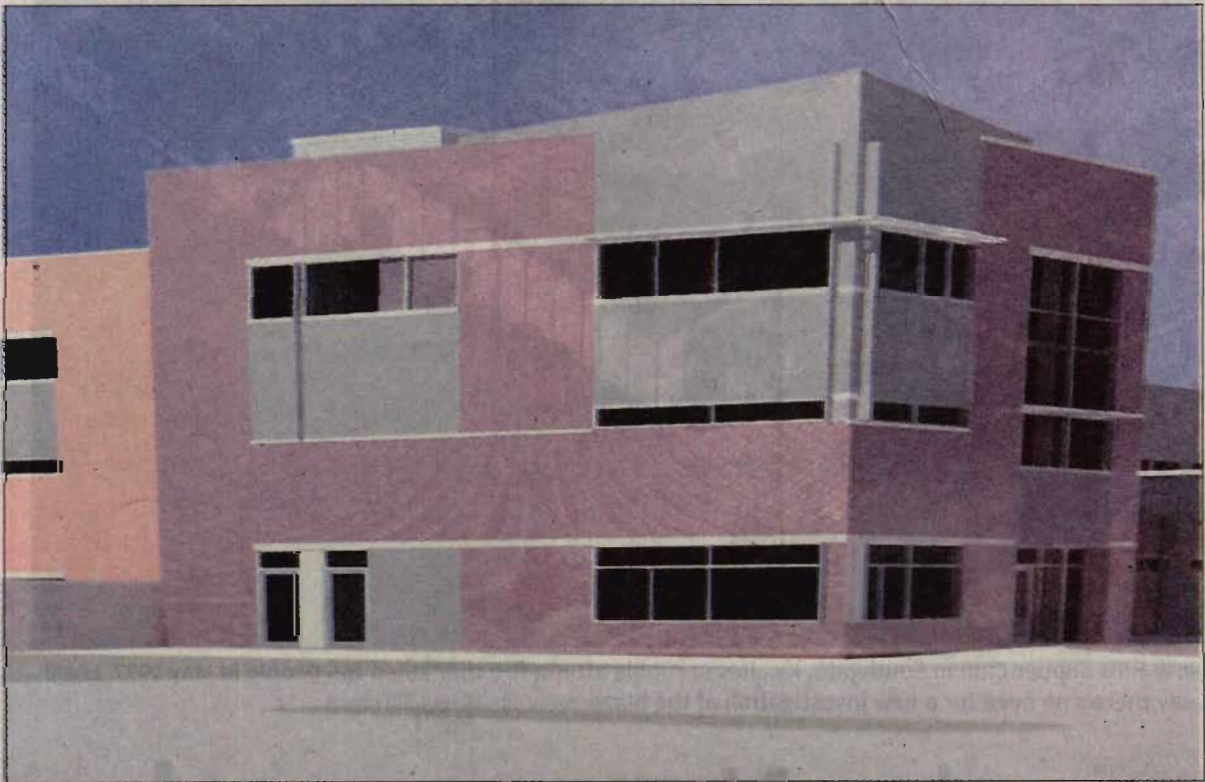


Hospital foundations announce a merger



Architectural rendering of the 'health services pavilion' for women's health services. Staff photo by Bill Lackey

Springfield Foundation will manage funds of two groups associated with Community.

By Kelly Mori
Staff Writer

SPRINGFIELD — Two local entities that supported medical services and training in association with the former Community Hospital have merged.

The board of the Community Hospital Independent Endowment Fund (CHIEF) has announced it is merging with the Community Hospital Health Services Foundation (CHF).

CHIEF, a foundation, had \$3 million in assets in designated and non-designated funds.

CHF is the parent corporation of the former Community Hospital and is now 50 percent owner of Community Mercy Health Partners, which is building the new combined hospital downtown.

The merger comes after CHIEF's role in supporting the former Community Hospital diminished since that hospital merged with Mercy Health Partners in 2004.

With the merger, the Springfield

Foundation will take over the management of more than \$860,000 in grants and scholarships that CHIEF once managed.

The 61-year-old Springfield Foundation was a logical choice for the gifts, said Faye Flack, executive director of CHF.

"Partnering with Springfield Foundation provides us with the level of professional expertise critical for the on-going stewardship of these gifts and their continued growth and benefit to our community over time," Flack said.

With 43 scholarships already on its books, the Springfield Foundation has the experience and resources to conduct grant and scholarship solicitation and awards, said Ted Vander Roest, Springfield Foundation executive director. Former members of CHIEF's board will sit on the advisory board, he said.

The balance of CHIEF's \$3 million will remain with CHF. CHF will continue its core mission of "providing women's health and reproduc-

tive health and education services in the community," Flack said. CHF will construct, own and operate a "health services pavilion" on Springfield Regional Medical Center's new downtown campus.

A separate entity is necessary to provide some women's health services — like tubal ligation and sterilization services. Springfield Regional Medical Center will not provide those because of its Catholic affiliation.

All fundraising and endowments to benefit Springfield Regional Medical Center will continue to be managed through a separate foundation, the Community Mercy Foundation, which was formed after the 2004 merger.

"On behalf of the CHIEF Board of Trustees, I would like to thank all of the dedicated members of our community and hospital associates who made donations to CHIEF and contributed to the improvement of health care in our community," said Edward Leventhal, CHIEF board chairman.

FOR IMMEDIATE RELEASE
March 13, 2009 – 10:00 AM

For further information contact:

Faye Flack, Executive Director, Community Hospital Health Services Foundation – (937)328-9704, or Charlotte Conley, Program and Development Director, Community Hospital Health Services Foundation – (937)328-9489

The Community Hospital Independent Endowment Fund (CHIEF)

Leaves a Legacy

Community Hospital Independent Endowment Fund (CHIEF) was created in 1972 as a non-profit, membership organization to promote the “excellence and growth” of Community Hospital and its School of Nursing through an ongoing giving program. For over 37 years CHIEF has been a major supporter of healthcare in our community. The dollars raised through numerous community fundraisers and donations from hospital associates, individuals, corporations and bequests provided financial support to the Birthing Center, Prescription Assistance, Health Care Center, Open Heart Surgery, Rocking Horse Center, Emergency Center, Springfield Regional Cancer Center and the Springfield Regional School of Nursing (formerly the Community Hospital School of Nursing,) and more.

After the consolidation of Community Hospital and Mercy Health System Western Ohio, forming Community Mercy Health Partners (CMHP) in 2004, the Community Mercy Foundation (1343 N. Fountain Ave) was designated as the official fund development organization for the new combined hospital system. In light of these changes, CHIEF ceased its fundraising efforts. However, it continued to support the hospitals, the School of Nursing, and the community by making grants from funds under its management.

Effective January 1, 2009, CHIEF merged with Community Hospital Health Services Foundation (CHF), with CHF as the surviving organization. CHF, incorporated in 1986, was the parent company of Community Hospital and related health enterprises until 2004, when it became a 50% owner of Community Mercy Health Partners. The hospital consolidation along with the construction of the new downtown hospital and the establishment of the Community Mercy Foundation were key factors in the decision to merge CHIEF into the Community Hospital Health Services Foundation. CHIEF donor designated funds not supporting the CHF mission of women’s health and reproductive health and education have been transferred to the Springfield Foundation for management. These funds will continue to support healthcare in our community as designated by the donors. Speaking on behalf of the CHIEF Board of Trustees, Edward

Leventhal, Chairman, stated that “the CHIEF Board felt that the Springfield Foundation is the best community vehicle to manage and grow these funds and carry out the wishes of the donors.”

In the nearly five years since the hospital consolidation, CHIEF has provided grants to our community totaling more than \$1.5 million. Major donations include \$950,000.00 to the Springfield Regional Cancer Center, \$50,000.00 to the Rocking Horse Center, \$62,600 to Community Mercy Hospice, \$20,000 to the Community Blood/Community Tissue Center, \$75,000 for defibrillator standardization, \$99,000 for School of Nursing scholarships and other support, a pledge of \$73,850 for the emergency department at the new downtown Springfield Regional Medical Center (SMRC), and over \$94,000 for other support services.

Recently, CHIEF provided \$83,000 to support the projects of the Community Hospital Health Services Foundation including the Women’s Health Resource Guide for Clark and Champaign Counties and the Clark/Champaign Reproductive Health Education Collaborative, whose purpose is to improve adolescent sexual health by reducing the incidence of risk-taking sexual behavior in teens, lowering teen pregnancy rates, and reducing the number of sexually transmitted infections.

“On behalf of the CHIEF Board of Trustees, I would like to thank all of the dedicated members of our community and hospital associates who made donations to CHIEF and contributed to the improvement of healthcare in our community,” said Edward Leventhal, Chairman of the CHIEF Board of Trustees.

For more information about the Community Hospital Health Services Foundation and its projects go to www.communityhospitalfoundation.org.

#